



Experimental Noize

SKRM-C8-G01 Guitar Set 1

10736 Jefferson Blvd #674, Culver City, CA 90230

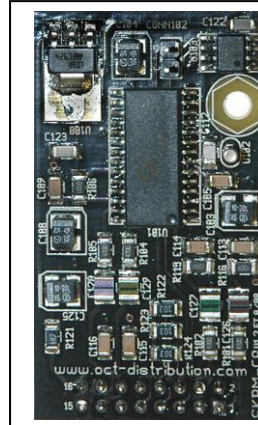
Features

Mono-in/mono-out general guitar set

Perfect for guitar pedals and amps

Please see SKRM-C8-XXX datasheet for electrical and mechanical details

RoHS Compliant



Actual Size
1.2" x 2.1"
(30.48mm x 53.34mm)

Description

The SKRM-C8-G01 from Experimental Noize is a mono-in/mono-out general guitar effects program set available in the SKRM-C8-XXX module. Perfect for guitar amps and stomp boxes, this program set is intended to have its output used as the final signal and not mixed back with the source. The reverb and effect are processed in parallel from the same input and summed based on the level for each to create the output.

For details on the SKRM-C8-XXX module, please see the SKRM-C8-XXX datasheet.

Guitar set 1 – G01

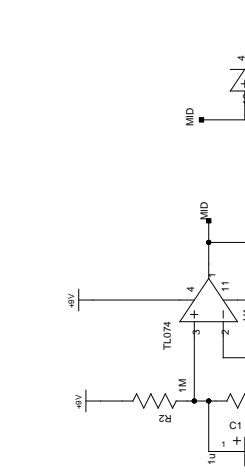
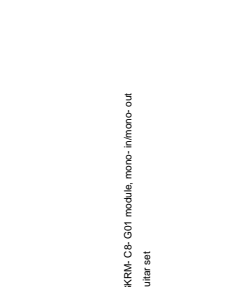
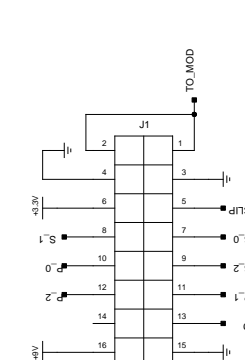
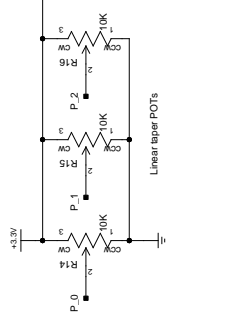
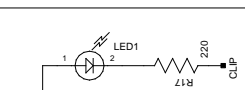
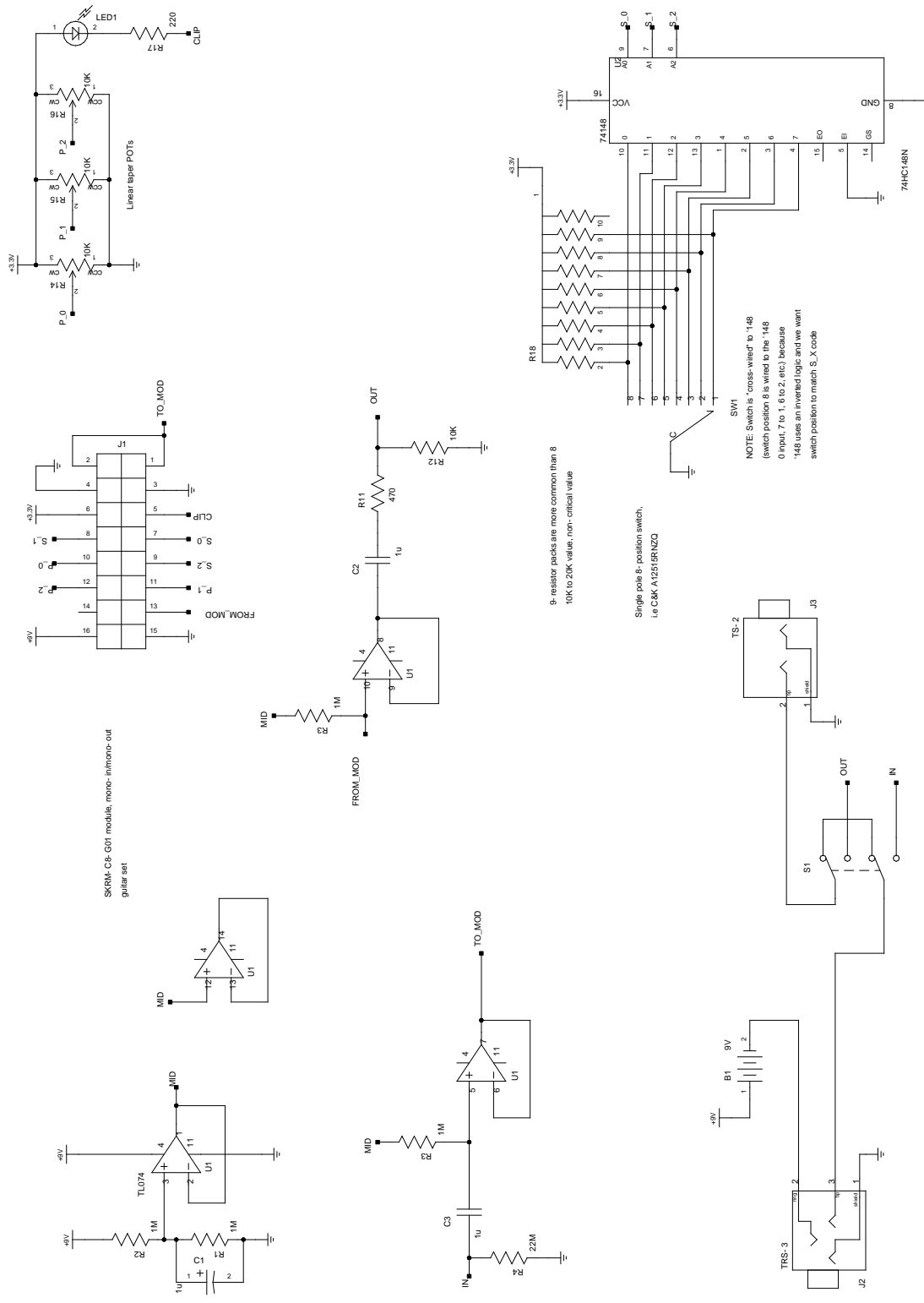
This is a mono-in/mono-out program set perfect for stomp boxes and guitar amp applications. The output of this set is designed to be used directly and NOT mixed back in with the dry signal.

Prg #	Description	POT0	POT1	POT2
0	Echo+Reverb	Reverb level	Delay	Echo level
1	Echo/Repeat+Reverb	Reverb level	Delay	Echo level
2	Chorus+Reverb	Reverb level	Rate	Chorus level
3	Flange+Reverb	Reverb level	Rate	Flange level
4	Phase Shifter+Reverb	Reverb level	Phase rate	Sweep width
5	Tremolo+Reverb	Reverb level	Rate	Tremolo level
6	Vibrato+Reverb	Reverb level	Vibrato rate	Vibrato width
7	Wah+Reverb	Reverb level	Sensitivity	Level/filter Q

Experimental Noize

10736 Jefferson Blvd #674, Culver City, CA 90230
(310)348-9626
www.xnoize.com

Rev. 1.4
18 April 2013



TITLE	Pedal for SRKM-Cs-G01 module, mono-in/mono-out		
FILE	pedal1.sch		
PAGE	1	OF	1
REVISION:	1.0		
DRAWN BY:	Frank Thomson		

Experimental Noise

10736 Jefferson Blvd #674, Culver City, CA 90230
 (310)348-9626
 www.xnoise.com

Rev. 1.4
 18 April 2013